

**FACTSHEET**

# Waste Wise Cities Tool in Addis Ababa, Ethiopia



Waste wise Cities Tool (WaCT) has proven its significance by rapidly assessing municipal solid waste management status and providing reliable information for the city.

The waste data results obtained with the help of WaCT application will have paramount importance for the preparation of Waste Management Master Plan and supporting the efforts of resource recovery in the city to tackle the multifaceted challenges of solid waste and plan for future demand. Relatedly, it will create a platform for attracting donors and potential partnerships for easier access to a solid waste infrastructure investment.

**Eshetu Lemma (Ph.D)**  
General Manager, Addis Ababa Solid Waste Management Agency  
Addis Ababa, Ethiopia



City: **Addis Ababa**  
Country: **Ethiopia**

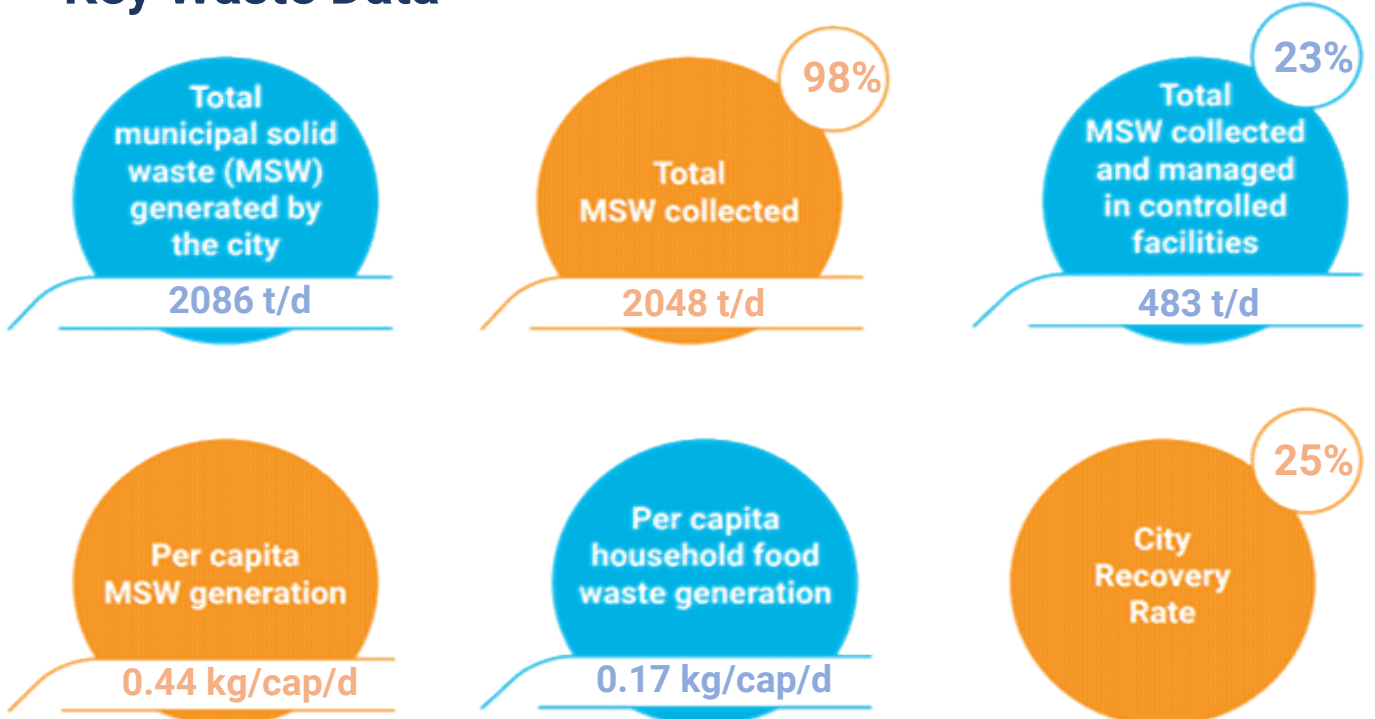


Population: **4,794,000 (2020)**



Year of WaCT Survey: **2021**

## Key Waste Data



NB: The total municipal solid waste generation in Addis Ababa could be underestimated due to the limitation in availability of reliable population data.

## Household and non-household waste generation



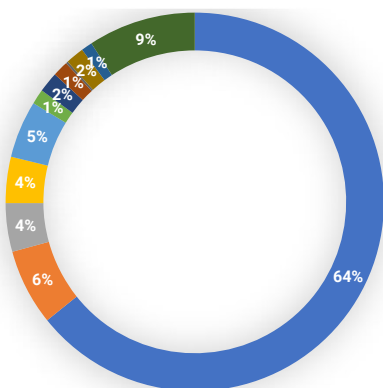
	Average household waste generation (kg/capita/day)	Total population	Total MSW generated by households (t/day)
High income	0.60	460,224	276
Middle income	0.29	2,368,236	676
Low income	0.26	1,965,540	508
<b>TOTAL</b>	<b>0.30</b>	<b>4,794,000</b>	<b>1,460</b>



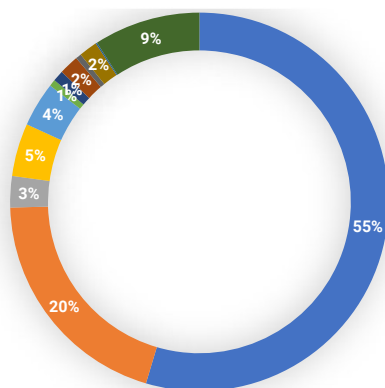
Total MSW generated from non-household sources (t/day): **626**  
 calculated using proxy of 30 % of total MSW

## Composition of waste at the households and at the disposal site

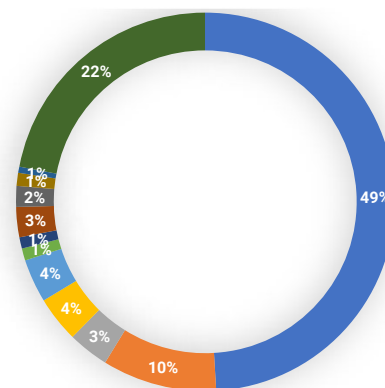
Household waste composition  
higher income areas



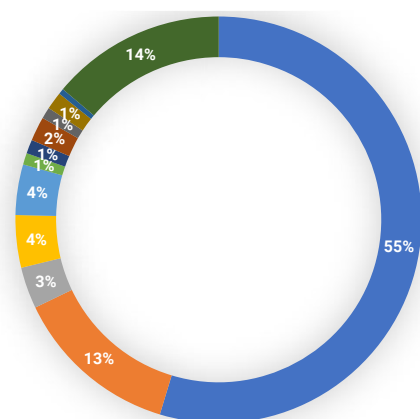
Household waste composition  
middle income areas



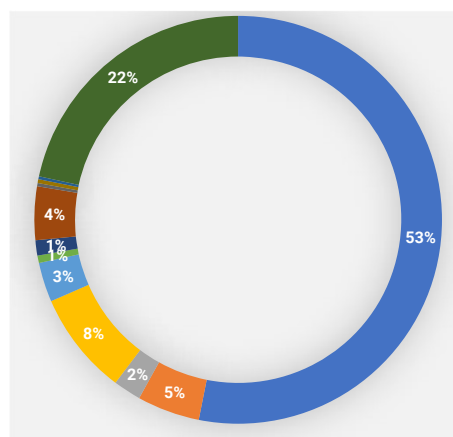
Household waste composition  
lower income areas



Average household waste composition



Waste composition at disposal site



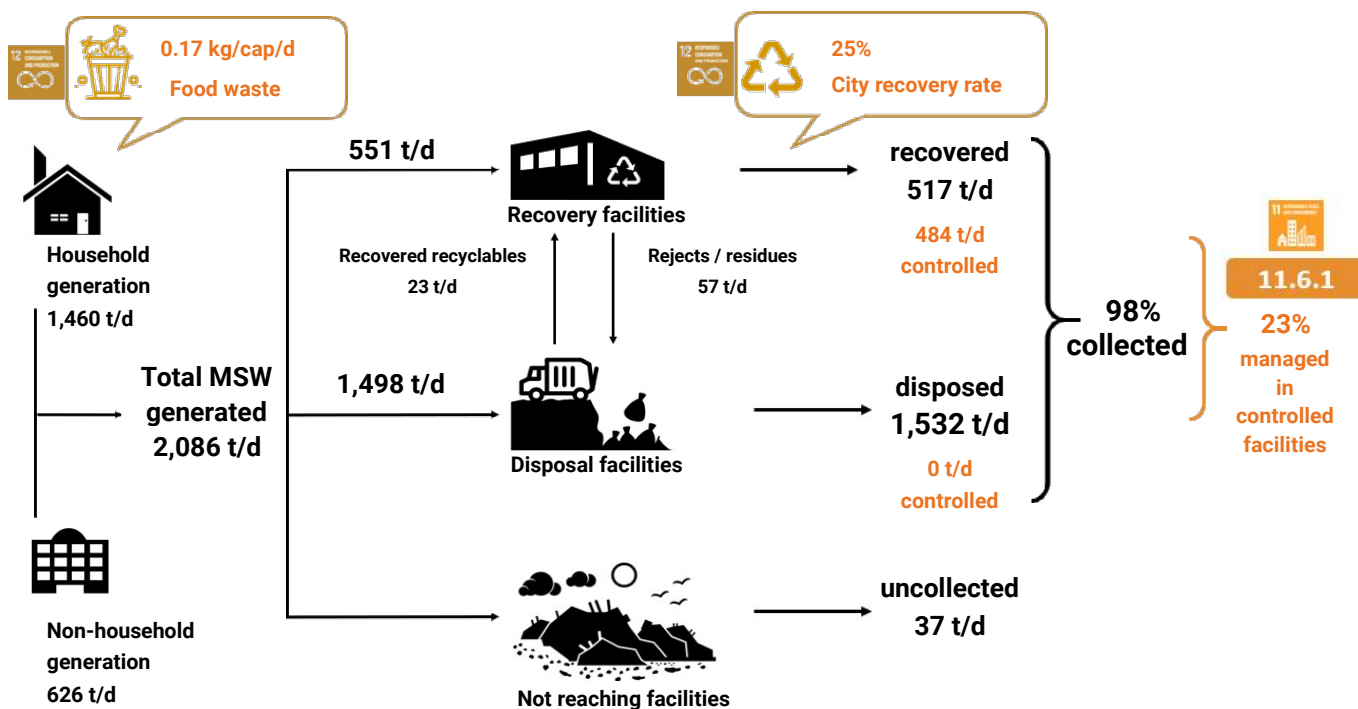
- Kitchen / canteen
- Garden / park
- Paper / cardboard
- Plastic film
- Plastics dense
- Metals
- Glass
- Textiles / shoes
- Wood (processed)
- Special wastes
- Composite products
- Other

## Potential recyclables from households



Types	Recyclable waste generation from households (t/day)
Food waste	798
Plastic film	61
Plastic dense	59
Paper and cardboard	48
Glass	16
Metal	13
<b>Total</b>	<b>995</b>

## WaCT Flow Chart



For more info and if interested in WaCT application contact the Waste Wise Cities Team at [WasteWiseCities@un.org](mailto:WasteWiseCities@un.org)